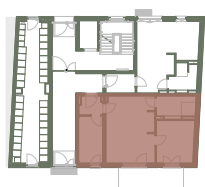
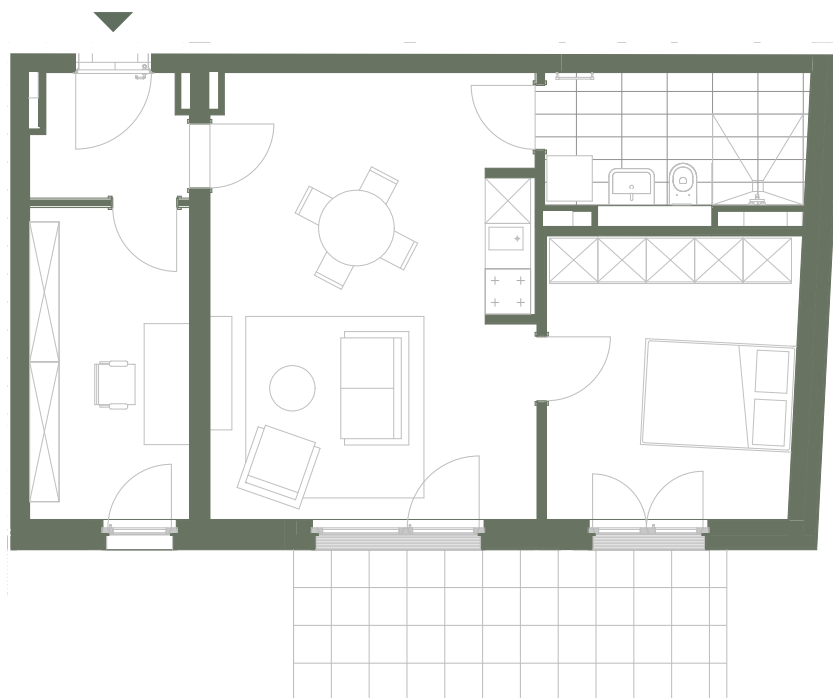


# Vorderhaus

VH 0.1



**kraft&kraft**  
IMMOBILIEN

## 3 Zimmer

### Flächen

Wohnen	25,22m <sup>2</sup>
Schlafen	12,35m <sup>2</sup>
Zimmer	8,72m <sup>2</sup>
Bad	6,49m <sup>2</sup>
Flur	3,23m <sup>2</sup>
Terasse	
(NF 11,46m <sup>2</sup> -50% Abzug)	5,73m <sup>2</sup>

---

**Wohnfläche** **61,74 m<sup>2</sup>**