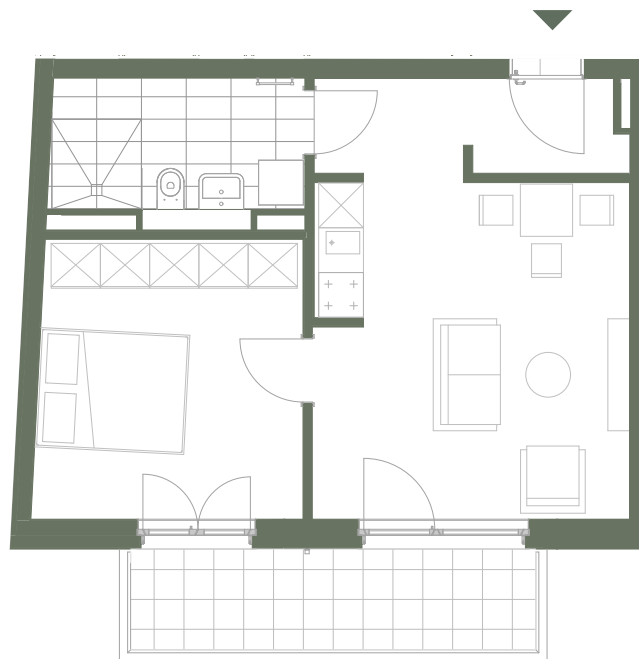


# Vorderhaus

VH 3.2



1m 1m 1m

**kraft&kraft**  
IMMOBILIEN

## 2 Zimmer

### Flächen

|                                    |                     |
|------------------------------------|---------------------|
| Wohnen                             | 22,06m <sup>2</sup> |
| Schlafen                           | 13,52m <sup>2</sup> |
| Bad                                | 6,41m <sup>2</sup>  |
| Flur                               | 2,64m <sup>2</sup>  |
| Balkon                             |                     |
| (NF 7,33m <sup>2</sup> -50% Abzug) | 3,67m <sup>2</sup>  |

---

**Wohnfläche** 48,30m<sup>2</sup>