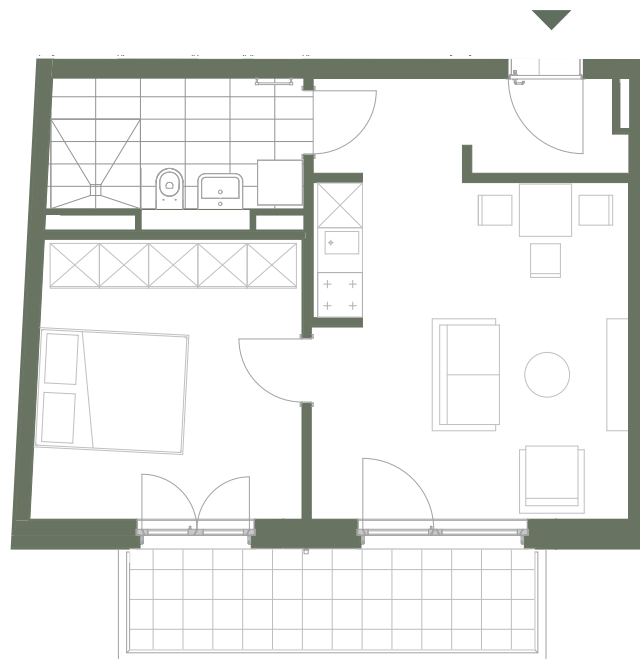


# Vorderhaus

VH 4.2



1m 1m 1m

kraft&kraft  
IMMOBILIEN

## 2 Zimmer

### Flächen

Wohnen	22,06m <sup>2</sup>
Schlafen	13,52m <sup>2</sup>
Bad	6,41m <sup>2</sup>
Flur	2,64m <sup>2</sup>
Balkon	
(NF 7,33m <sup>2</sup> -50% Abzug)	3,67m <sup>2</sup>

---

**Wohnfläche** 48,30m<sup>2</sup>